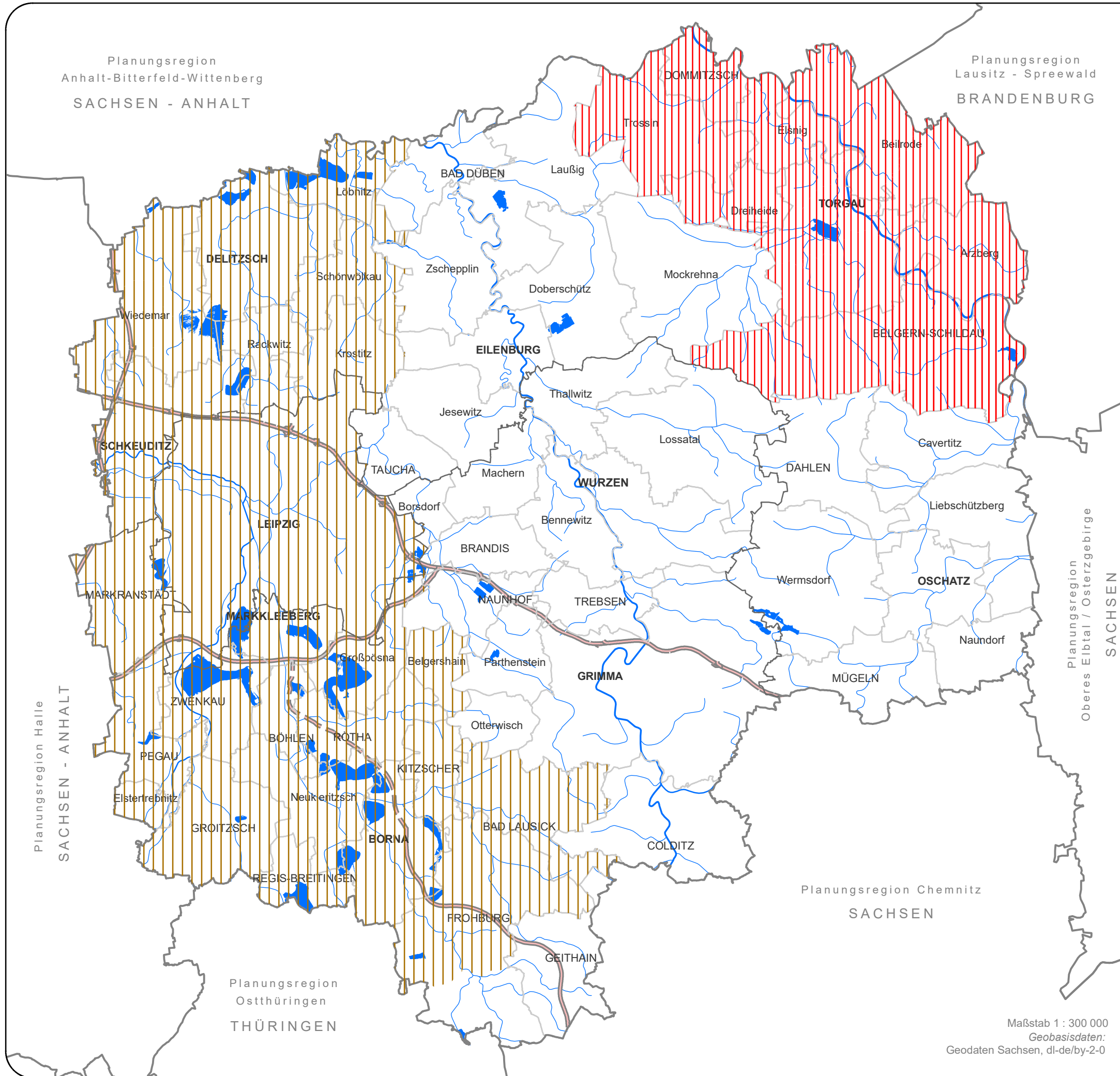











**REGIONALPLAN  
LEIPZIG-WESTSACHSEN**  
Räume mit besonderem Handlungsbedarf



-  Gebiet mit lagebedingten Nachteilen (Kap. 2.1.3)
-  Raum mit besonderem Handlungsbedarf - Bergbaufolgelandschaft (LEP Kap. 2.1.3)

-  Bundesautobahn
-  Bundesautobahn (in Bau)
-  Standgewässer >30 ha
-  Fließgewässer

-  Gemeindegrenze
-  Kreisgrenze
-  Regions-/Landesgrenze

Maßstab 1 : 300 000  
Geobasisdaten:  
Geodaten Sachsen, dl-de/by-2-0

Gebietsstand: 01.01.2020